

# Crane Inspection Report

## GCD15

### - Crane Information

- Inspection Date : 22th November 2023
- Model No. : GCD15
- Serial No. : 322960
- Operation Hours : 17 Hours
- Manufactured date : May 2023

### - Crane Condition

- Crane is in excellent working condition. – Some Components require Lubrication before use.
- Tested driving, steering, Main boom Up and down, extend, retract, Slewing left, right. All Outrigger deployed, dismantled.
- Inspected main wire rope, drum, sheeves, hook, cable reel, cylinders, hydraulic fittings, slewing gear, tires, Engine running. A/C, Heater working well.
- No damaged parts, No leakage parts, painting is in good condition. – visual inspection.
- Petrol engine with LPG as a fuel. – factory option. – LPG Tank is equipped.
- Operation Hour is Just 17 hrs.
- Paper Load Chart and manuals in position.
- Inside of cabin – Hydraulic levers, chair, fire extinguisher looks new.
- MIL is on - Engine Alternator is bad – Will be replaced under warranty ETA DEC 2023.

● Crane Photos

- Basic information

Name Plate.



Operation Hours



- Overview

Front Right





Front Left



Rear Right





Rear Left



- Tires

RH Front



LH Front





**RH Rear**



**LH Rear**



**- Outrigger**

**LH Front**



**RH Front**



**LH Rear**



**RH Rear**



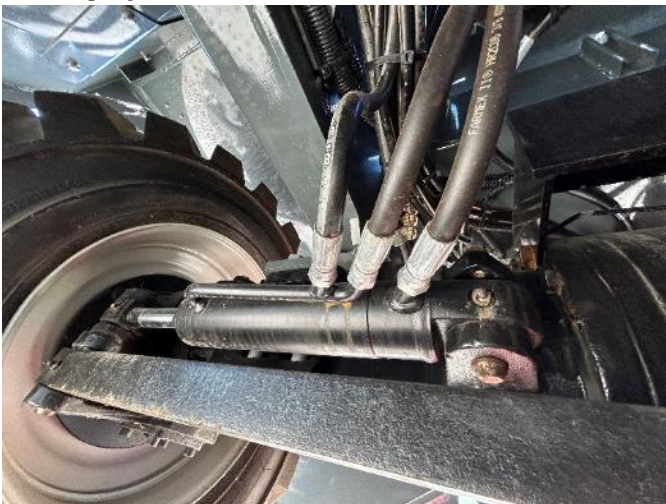


- Cylinders

Luffing Cylinder



Steering Cylinder - LH Front



RH Front



LH Rear

RH Rear

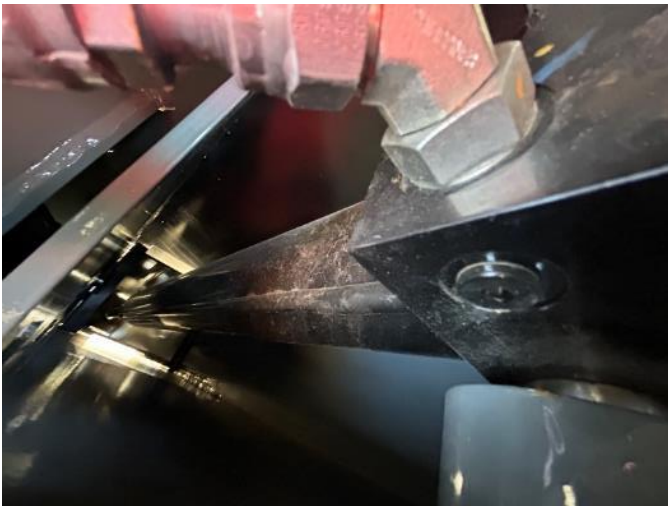




**Outrigger Cylinder – LH Front**



**RH Front**



**LH Rear**



**RH Rear**



- Main Components

Turntable device, Slewing Ring



Hook Block, Front head Section

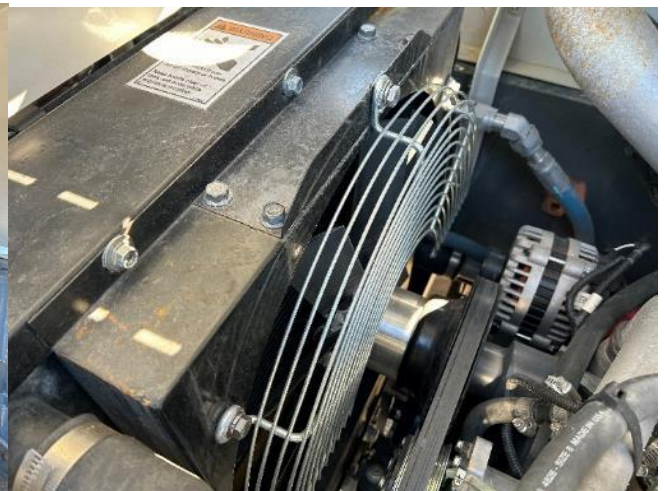
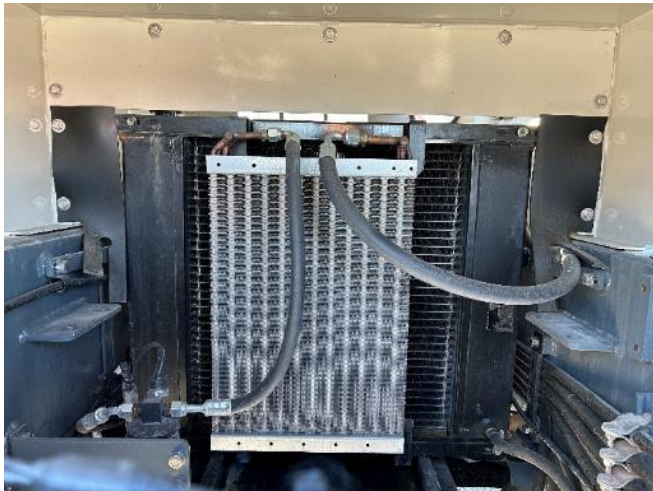




**Main Winch Hydraulic Block**



**Radiator, Heat Exchanger**



**Engine**





LPG Tank



Counterweight





- Cabin

Cabin Outside



Cabin Inside

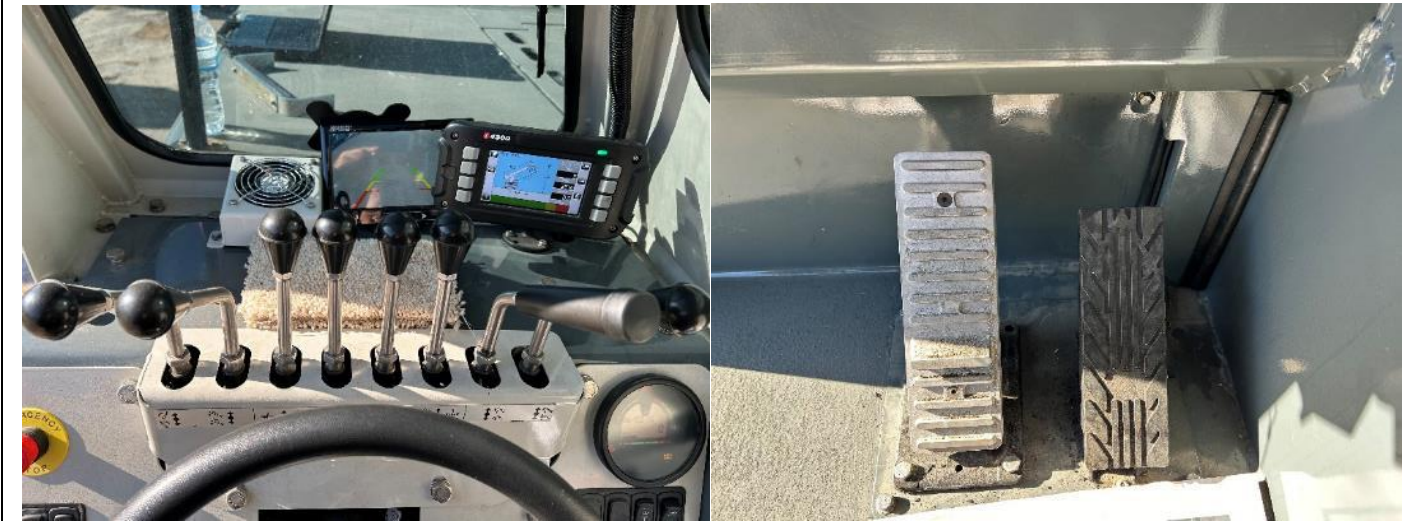




Switch



Levers, Pedals





Display, Rear view camera



Cabin Air Conditioning system



- Lights

Front



Rear

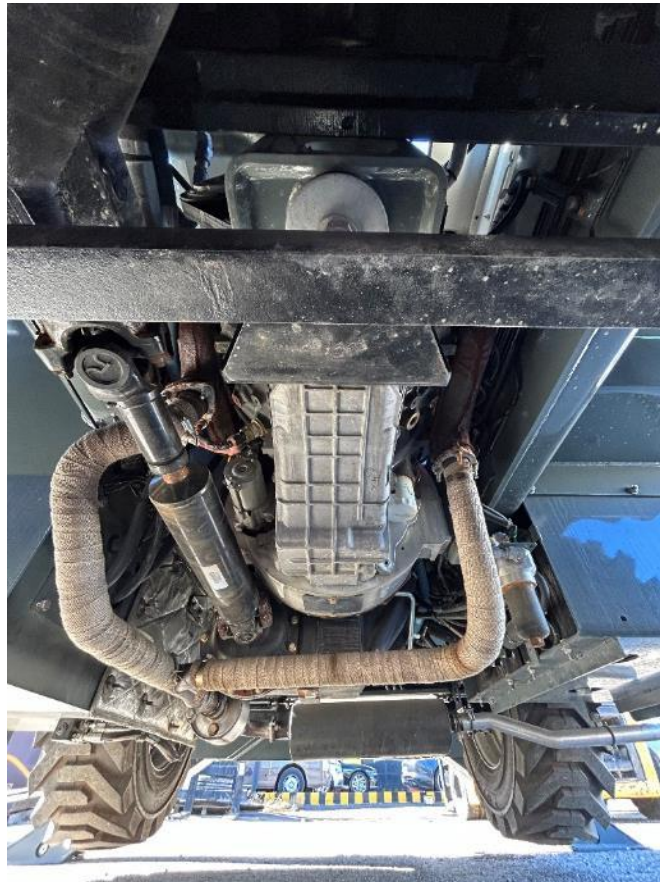




Boom working light



Drive Train



**Boom Section**



**Swing boom**





- Crane in Working Position

Extended Boom



- Remarks

Engine MIL is on – Alternator is bad, will be replaced under warranty ETA DEC 2023.